

autopulit®

MAQUINARIA PARA EL PULIDO AUTOMÁTICO, S.A.

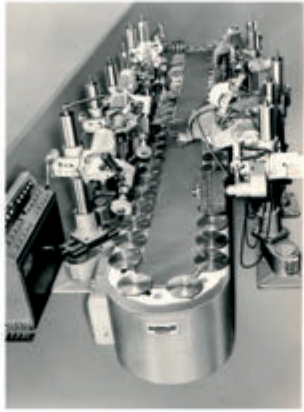
*Manufacturer of CNC machines
and robotic cells for sanding,
polishing, deburring and
weld dressing of metal parts.*

autopulit®

AUTOPULIT - Maquinaria para el pulido automático, S.A.
Pol. Ind. Sant Isidre - c/Puigmal, 136
08272 - Sant Fruitós de Bages - Barcelona - Spain
+34 93 874 33 99 autopulit@autopulit.com



Autopulit is a manufacturer of automatic, CNC machines and robotic cells for sanding, polishing, deburring and weld dressing of metal parts.



The company was founded in 1961 in Manresa (Barcelona) Spain, specialising in the manufacturing of automatic and CNC machines for belt grinding and polishing.

In 1998, a new plant of 6000m² is build in Sant Fruitos de Bages (Spain).



We design and manufacture equipment that allows us to meet the needs of sectors as diverse as automotive, aeronautics, Horeca, sheet metal, construction, rail, electrical appliances or watches, among others.



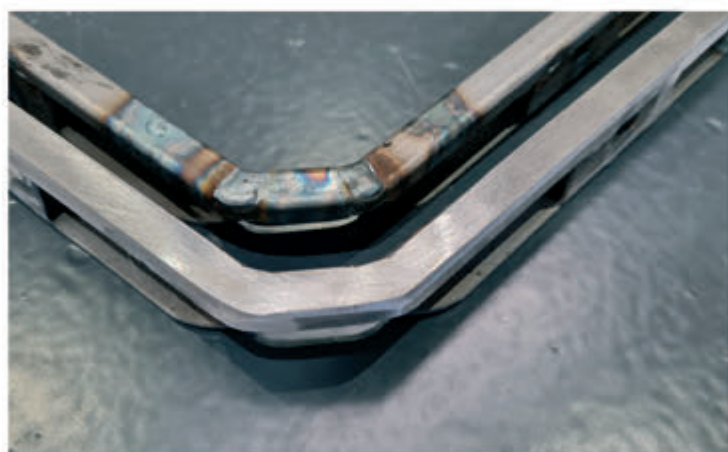
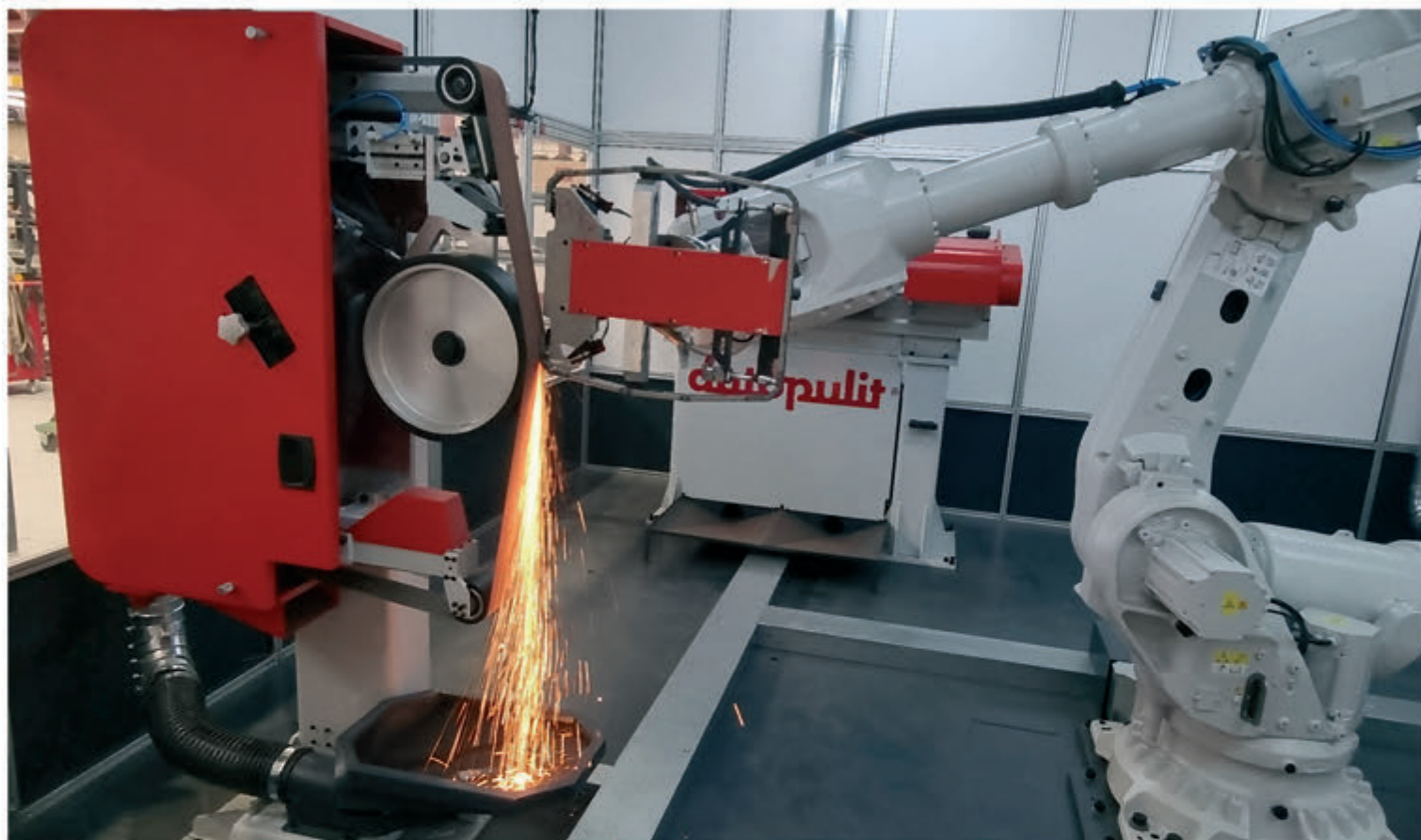
The know-how accumulated by the company is in the people. A team made up of senior professional profiles who have developed their professional careers in the company, innovating and growing with it, is our best guarantee.

autopulit.com

autopulit@autopulit.com



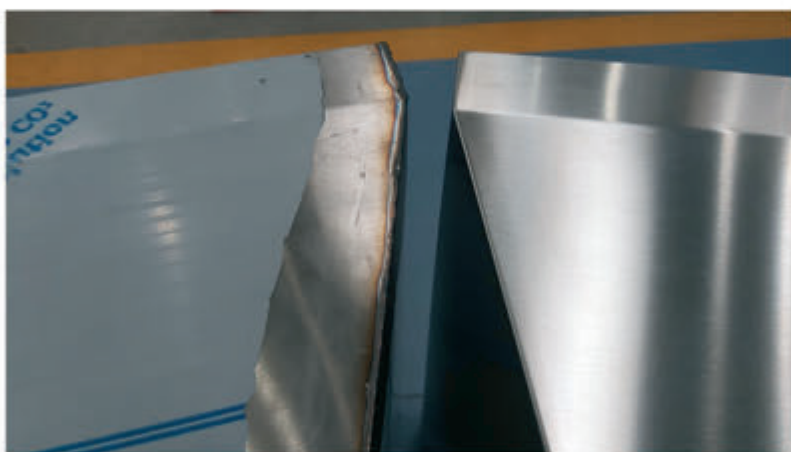
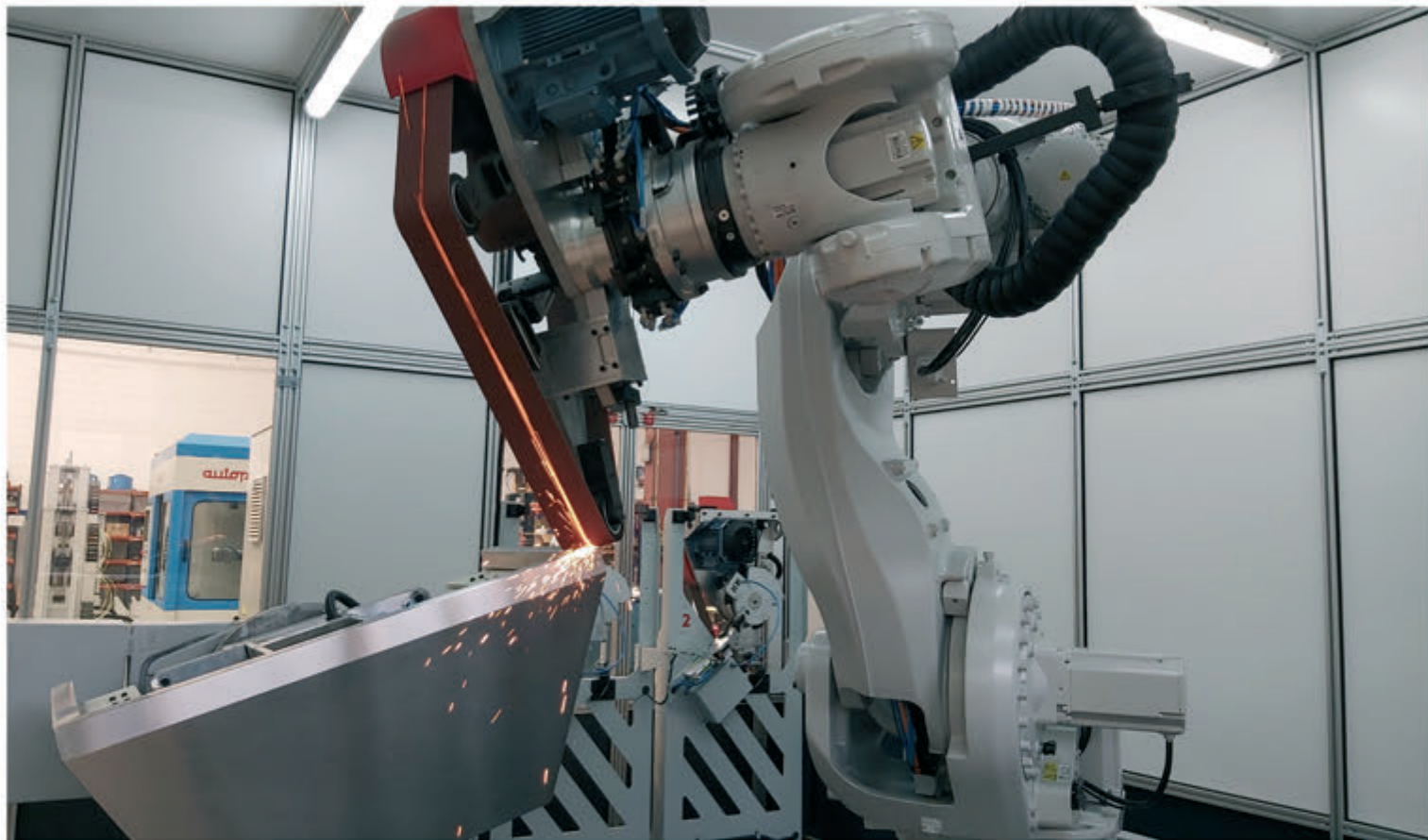
Weld dressing robotic cell



Robotic cell for weld dressing of shaped sheet metal parts such as parking meters, passage control, telecommunication cabinets, covers, doors, etc. It includes a measuring device to correct and compensate the geometrical deviations of the parts. Piece holding table with capacity for 2 parts allowing loading and unloading during the working cycle.



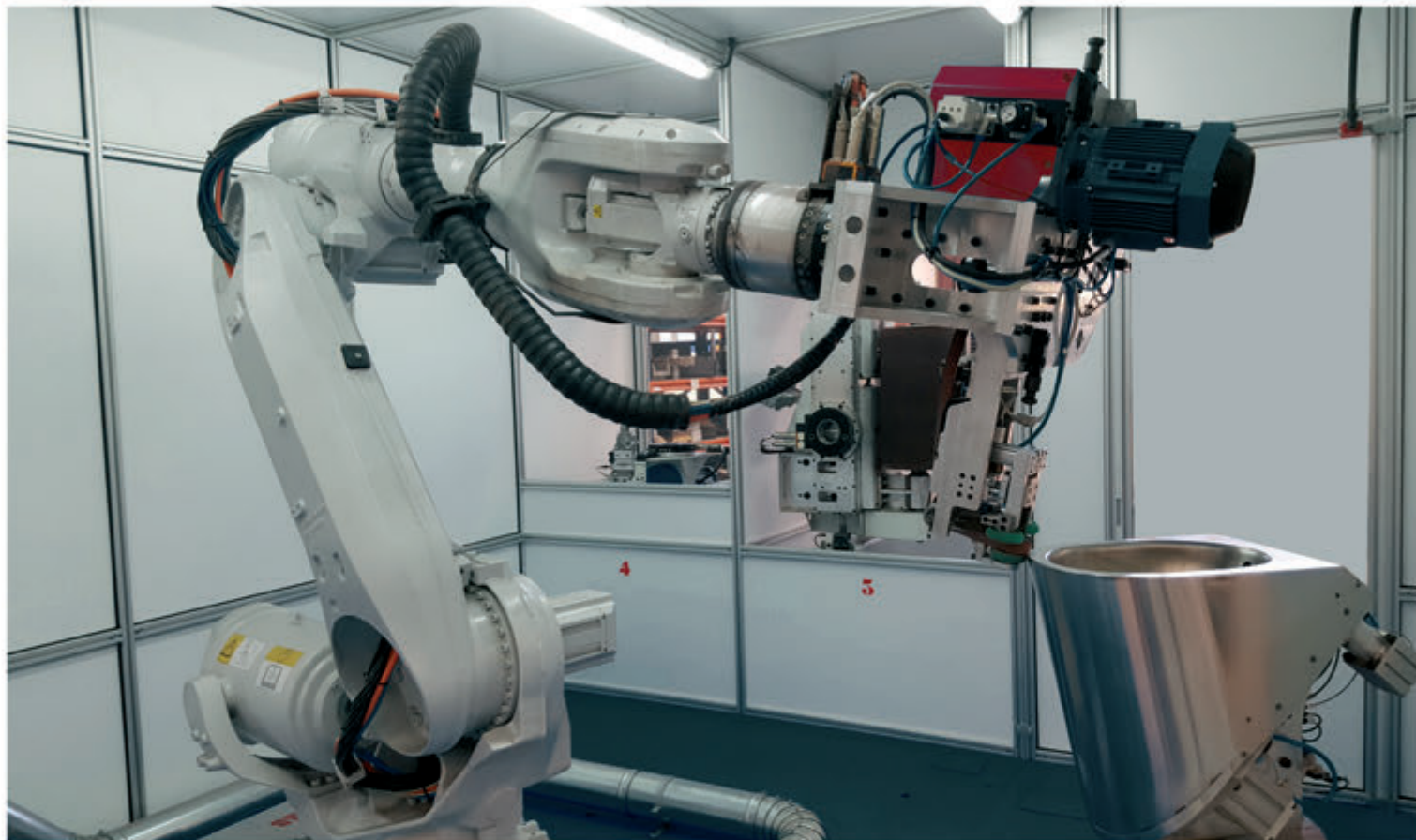
Weld dressing robotic cell



8-axis robot cell with automatic change of up to 4 tools for weld dressing and satin finishing of stainless-steel extractor hoods for the HORECA sector. Piece holding table with capacity for 2 parts allowing loading and unloading during the working cycle.

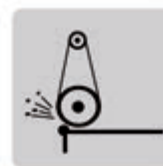


Weld dressing robotic cell



7-axis robot cell with automatic change of up to 5 tools for weld dressing and satin finishing of stainless-steel worktops, vats, dishwashers, sinks, etc., for the HORECA sector. Piece holding table with capacity for 2 parts allowing loading and unloading during the working cycle.



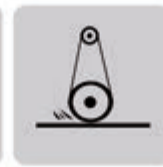


Weld dressing robotic cell



Robotic cell for weld dressing of shaped sheet metal parts such as electric cabinets, telecommunication cabinets, covers, doors, etc. It includes a measuring device to correct and compensate the geometrical deviations of the parts. Piece holding table with capacity for 2 parts allowing loading and unloading during the working cycle.





Robotic cell for belt grinding of hand tools



Robotic cell equipped with 1 abrasive belt backstand, 1 double polishing unit and indexed magazine for parts, for finishing of hand tools such as hammers, axes, etc.



CNC polishing for aluminium truck wheels



High production capacity installation composed of 2 rotary CNC transfer machines for the internal and external polishing of forged aluminum truck wheels up to 30".



CNC polishing machine for car wheels

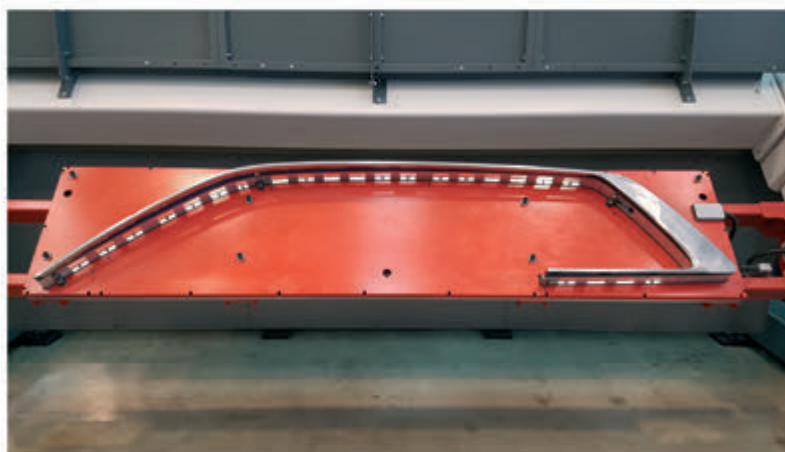


5 interpolated axes CNC machine with 1 double working head for polishing or satin finishing of aluminum car wheels.





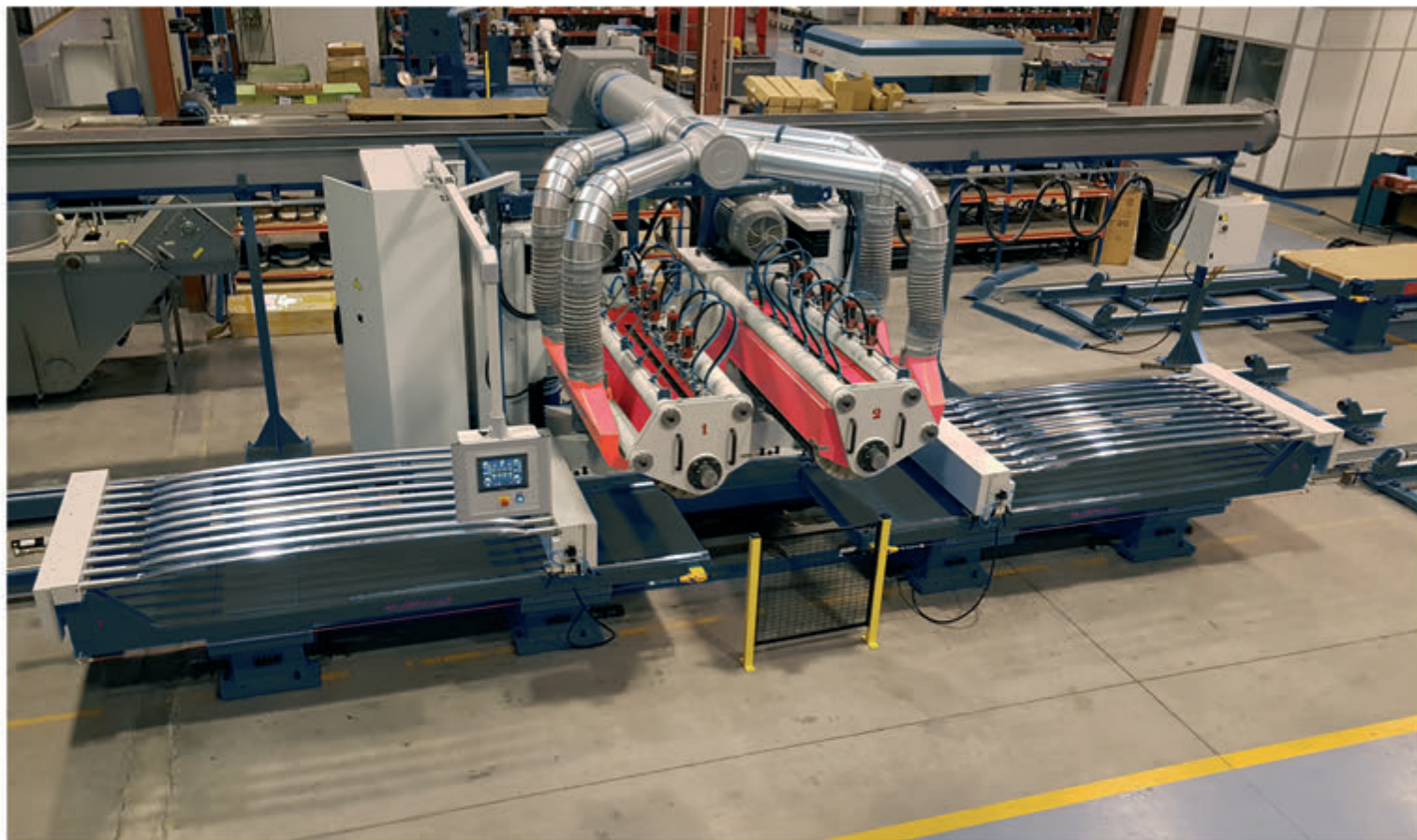
Robotic cell for the automotive sector



8-axis robotic cell with automatic loading of up to 4 tools for car window trim polishing. Piece holding table with capacity for 2 parts allowing loading and unloading during the working cycle.



Polishing machine for car roof rails



***High production capacity machine** for polishing aluminum car roof rails. Capacity for up to 10 parts per table with synchronized movement for positioning the parts.*





Belt grinding of dishes and tank bodies



Machines for internal and external belt grinding and polishing of bottoms/dishes and tank bodies for food, pharmaceutical, liquid transport and chemical industries, etc.



Belt grinding and polishing of dishes



Specific CNC machine for belt grinding, polishing and satin finishing of bottoms/dishes up to Ø6000mm, both inside and outside, for food, pharmaceutical, liquid transport and chemical industries, etc



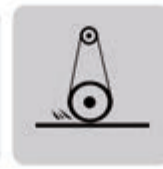


Belt grinding of round tubes and bars



"Centerless" type belt grinding and polishing machine with universal heads for finishing tubes and round bars with diameters from 6 to 150mm.
Automatic loading and unloading system with ramp magazines.





Belt grinding of square tubes and plates

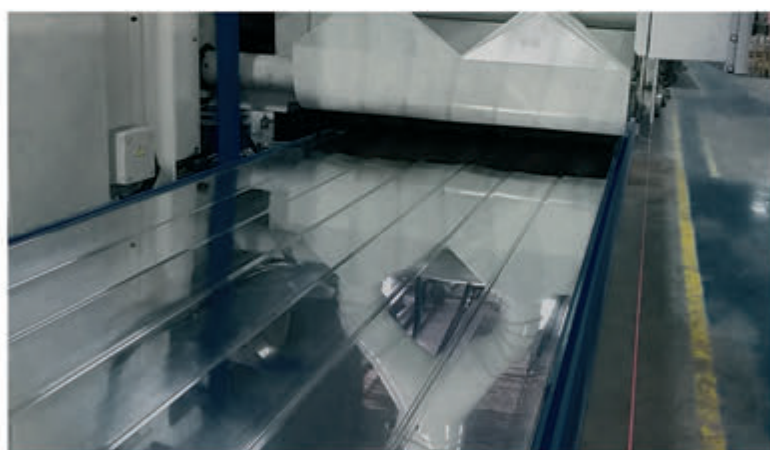


Belt grinding and polishing machine with universal heads for finishing square tubes, plates and flat parts.





Polishing machines for aluminium profiles



Polishing machines for aluminum profiles and flat parts with
1 or 2 working tables of 1000x7000mm.



Polishing machine for sheet metal



Polishing machine for sheet metal and flat parts.
Table of 1250×3000 mm with alternative movement and
polishing head with oscillation and automatic installation
of polishing compound.



Belt grinding and deburring machine



Belt grinding and deburring machine for fine blanking and stamping parts for the automotive sector, including of 2 belt grinding heads, 2 planetary heads with brushes and magnetic conveyor table for the correct fixing of the parts.



Deburring of sintered gears



***High production capacity rotary transfer machine** for deburring sintered gears for the automotive sector.*

